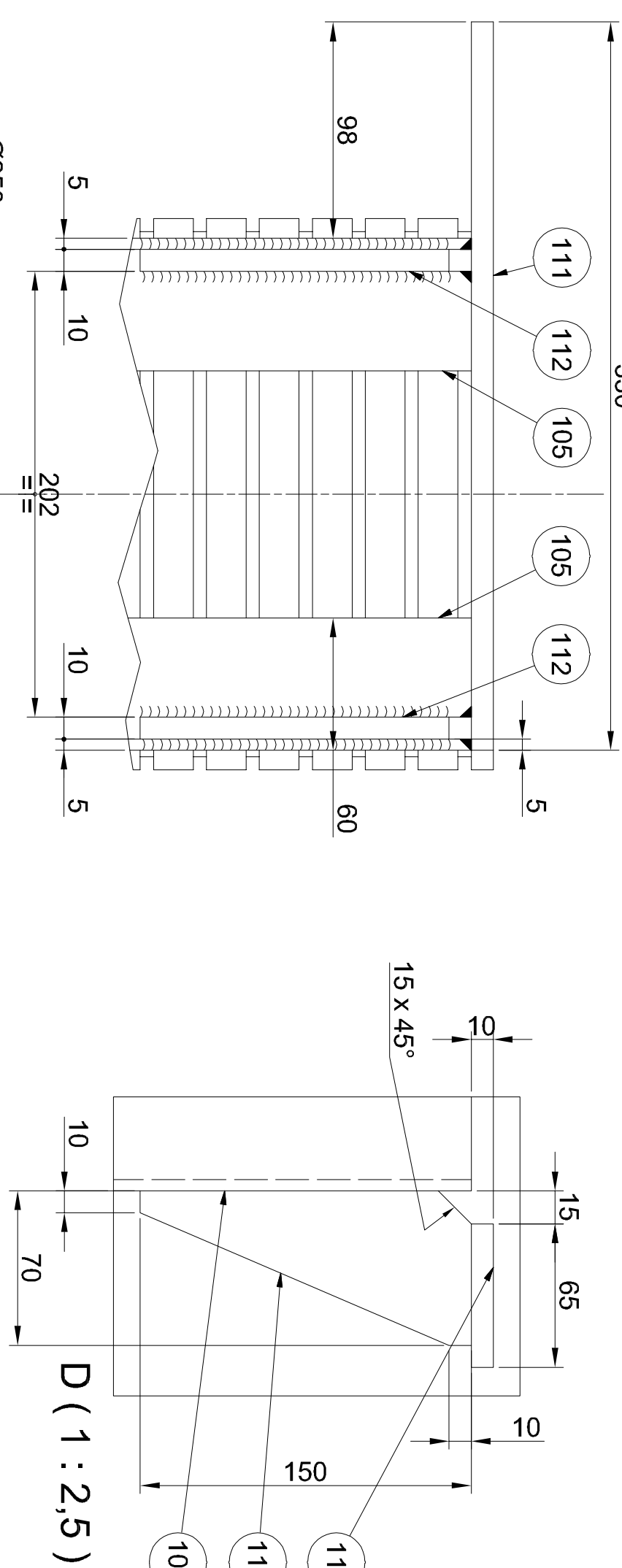
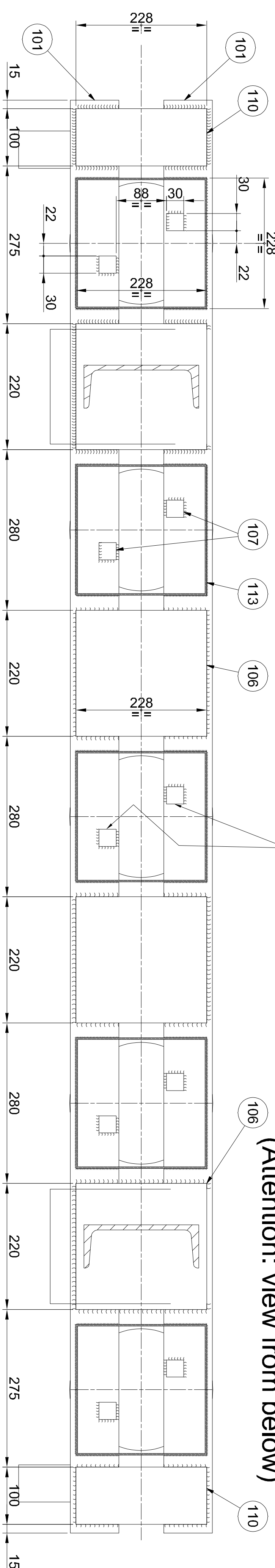


	16	15	14
GENERAL LACINING TOLERANCE - (GRADE MEDIAN) (UNI EN ISO 22813)	REMOVE SHARP EDGES TOOLURE SINGOLI VIVI		
TOLLERANZA GENERALE IN LACINIA (GRADO MEDIO) (UNI EN ISO 22813)			
Size	above up to	Group d fino a	
			Charter Smauto
Tolleranza	±0.1	±0.2	±0.3
			±0.5
			±0.8
			±1.2
			±2
			±3

B-B (1:5)

NON SILDARE QUESTO LATO
(NO WELDING ON THIS SIDE)

Attenzione: vista dal basso
(Attention: view from below)



2

NORME GENERALI DI SALDATURA

GENERAL RULES FOR WELDED JOINTS

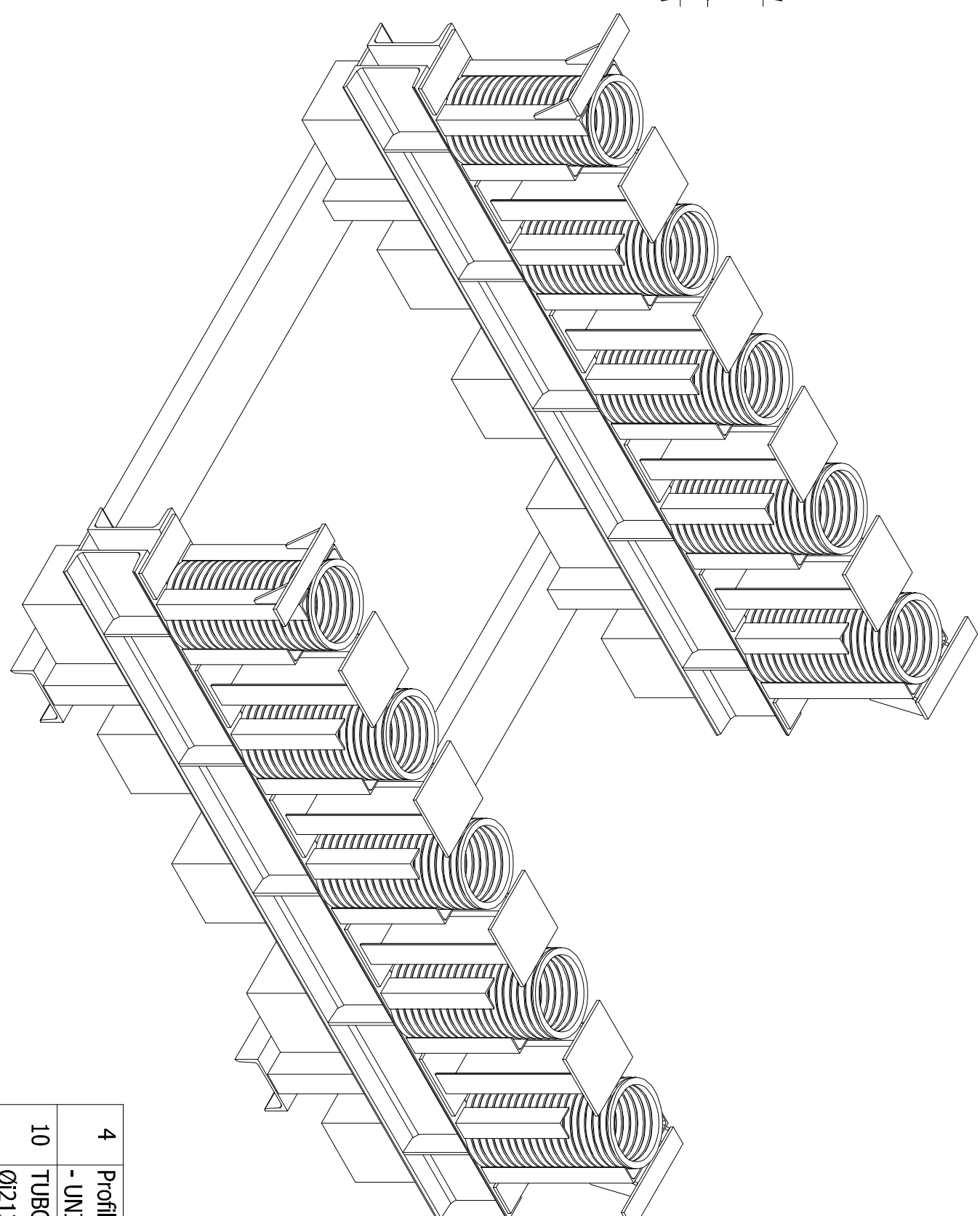
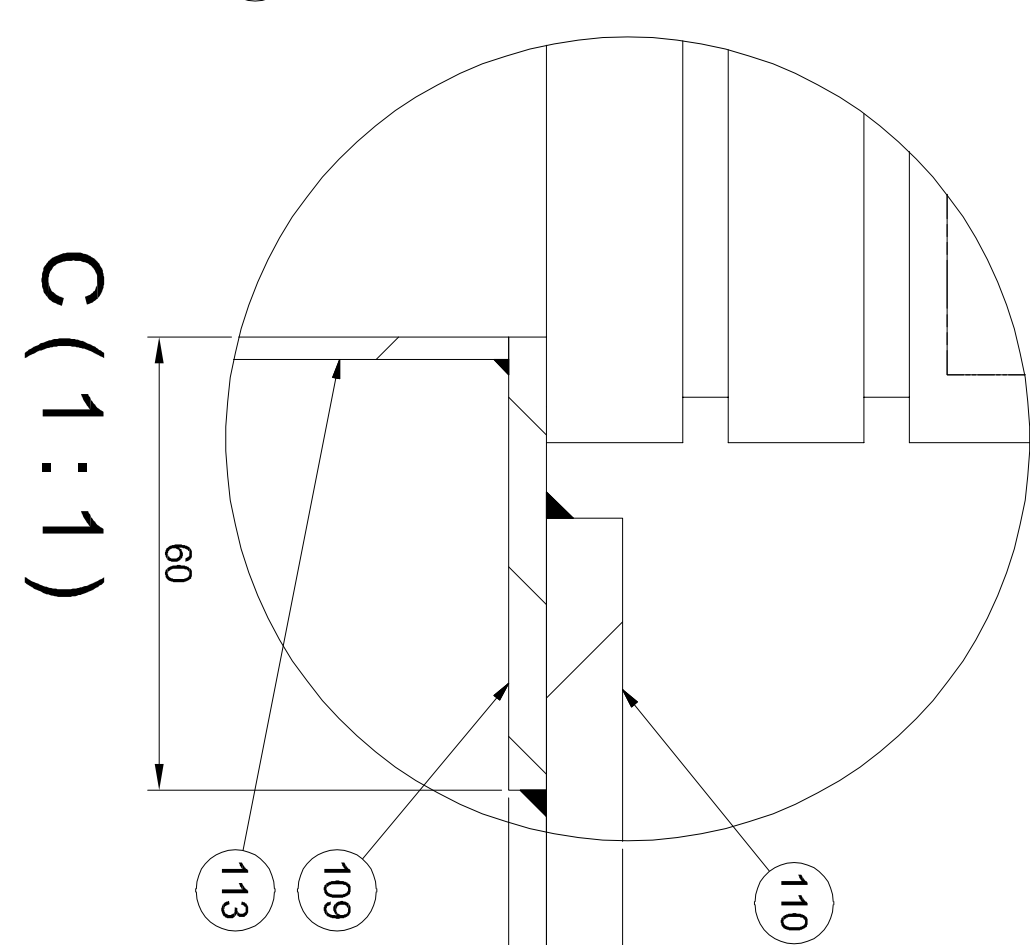
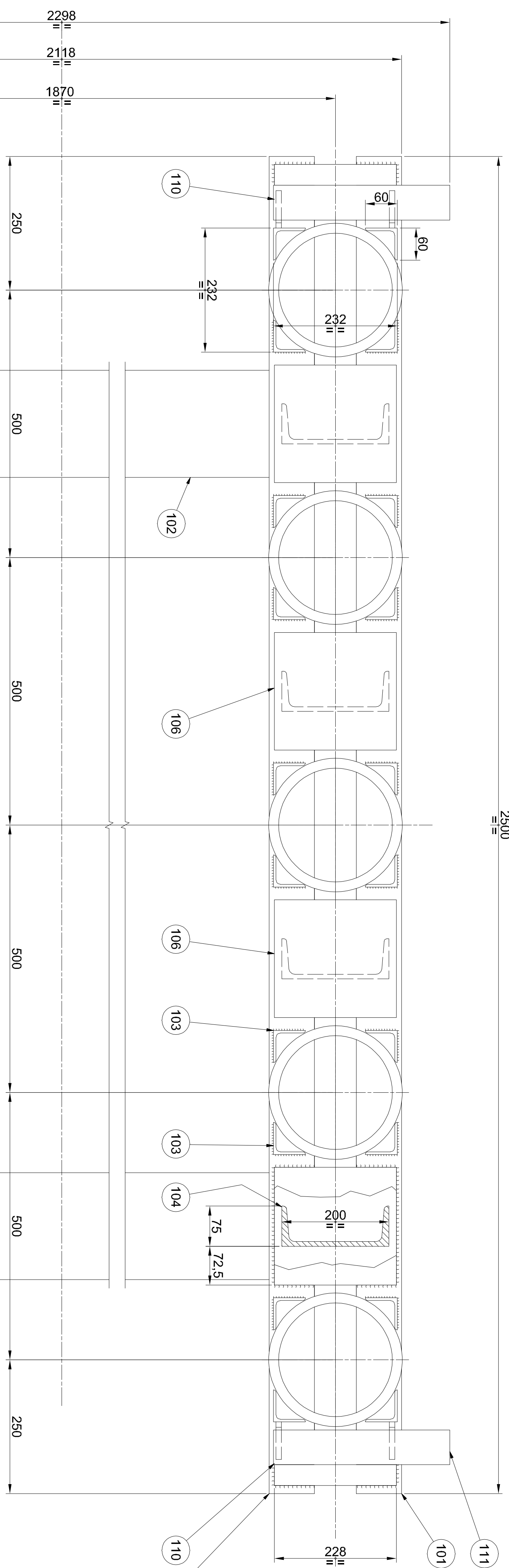
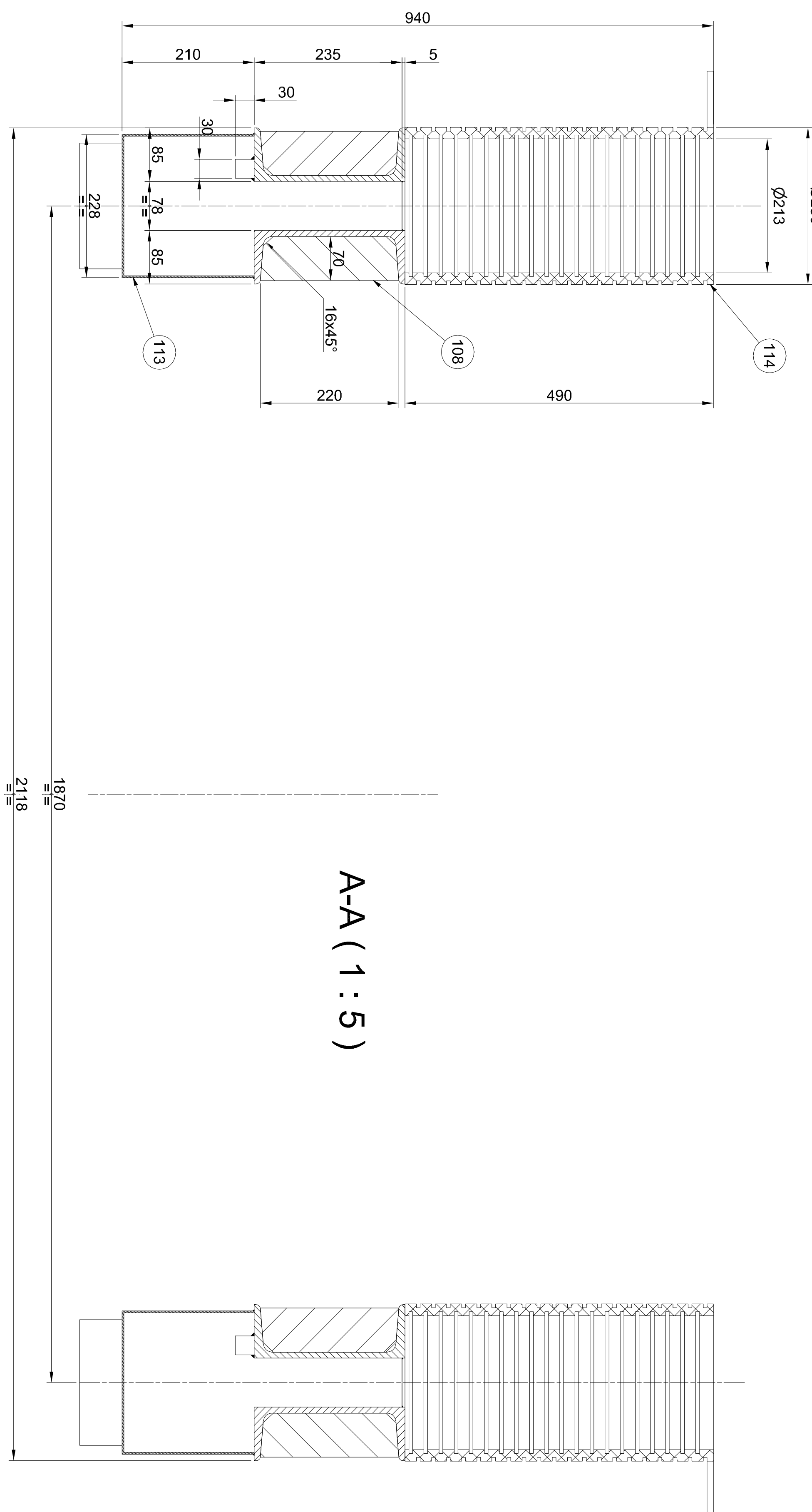
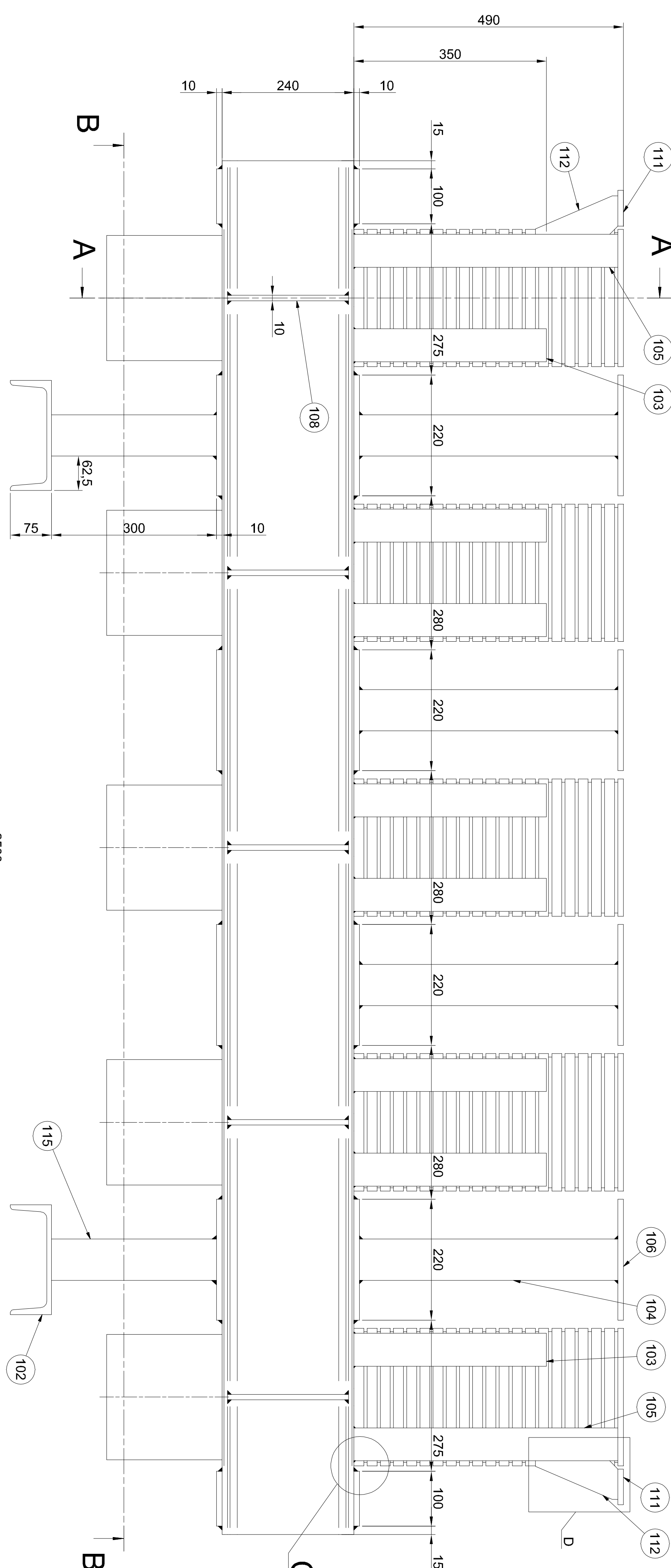
PREPARAZIONE DEI LEMBI SECONDO DIN 1912
EDGE PREPARATION FOR WELDING ACCORDING TO

 DOVE NON ALTRIMENTI INDICATO - $\lambda = 0,7$
DELLO SPESSORE MINIMO DA COLLEGARE

WHERE NOT SPECIFIED - A = 0.1
OF THE MINIMUM THICKNESS TO BE JOINT

BRUNO

 **BRUNO**
PREZZI spa
UFFICIO TECNICO
VALIDO PER COSTRUZIONE



**NB . Assieme a carico cliente
Assemblee in customer's
scope of supply**

Pos.	Material	Numero Parte	Messa	Ricev.
4	Profilato JPM 200 - L=300 - UNI EN 10279	115	52535R EN 10205	7,6
10	TUBO CORRUGATO Øx250 L=1490	114	PE-AD	43,5
10	Cassaletto lamiera sp. Ø250x250x10	113	52535R EN 10205	6,5
8	Sheet metal box 100 100x250x10	112	52535R EN 10205	0,5
4	Lamina sp. 10x200x228	111	52535R EN 10205	1,7
20	Lamina sp. 60x70x8	110	52535R EN 10205	1,8
20	Lamina sp. 60x70x8	109	52535R EN 10205	0,2
20	Lamina sp. 10x20x20	108	52535R EN 10205	1,2
24	Lamina sp. 30x30x30	107	52535R EN 10205	0,2
24	Lamina sp. 30x30x30	106	52535R EN 10205	3,9
8	Profilato L 60x60x5 - L=4700 - UNI EN 10056-1	105	52535R EN 10205	2,2
8	Profilato L 60x60x5 - L=4700 - UNI EN 10056-1	104	52535R EN 10205	11,9
32	Profilato L 60x60x5 - L=7500 - UNI EN 10056-1	103	52535R EN 10205	1,6
2	Profilato JPM 200 - L=300 - UNI EN 10279	102	Acciaio, Dado	52,5
4	Profilato JPM 200 - L=3500 - UNI EN 10279	101	52535R EN 10205	83

Telaio di fondazione ASPO Avvolgitore
(Foundation frame - Winder)

Disegno n.

60-02-30A-105

[illegible]

Via per Genova 3 - 80138 COD DI MACE (CE) - C.A.P. 29015 (PR) - ITALY
tel. 032625621 / FAX 0326001337 - e-mail: buono@unitedelbionoriviered.com

